

Hybridisation Shaking Incubators

With a compact, space-saving stackable design and temperature uniformity to within $\pm 0.2^{\circ}\text{C}$, Alpha Laboratories' hybridisation shaking incubators can be used for numerous temperature-dependent laboratory applications.

In addition to the standard entry-level model, the range includes four incubator models, each supplied in one of four shaking platform formats – vortex, orbital, reciprocal or rocking – and customisable for nucleic acid hybridisation techniques with three rotisserie options.

A large 3.6 inch colour-touchscreen control panel simplifies manipulation of speed, temperature and time within an easy to programme 3-line display, while a 32-bit microprocessor provides the temperature uniformity and stability necessary to support the most temperature-sensitive applications.

A modern design, stylish front door panel closes upon the stain-resistant interior of a robust metal chassis designed to withstand the stresses of frequent daily usage.

Five models are available in standard, vortex, orbital, reciprocal and rocking shaking-platform formats.

Typical Applications

- Overnight cultures
- Staining, blocking and antibody incubations
- Nucleic acid hybridisation

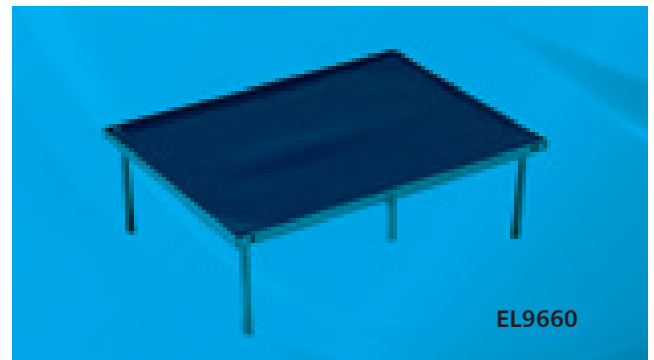
Shaking platforms in orbital and reciprocal models may be modified with the addition of flask holders to accept 5 x 250ml (EL9662) and 4 x 500ml (EL9664) flasks.

An additional 27 x 20cm platform (EL9660) is available to double the capacity in the orbital and reciprocal models.

Each model (except standard) is customisable for hybridisation applications with three rotisserie options.



EL9662



EL9660



EL9654 for 8x40mm glass tubes



EL9656 and EL9658 for 16x50ml & 24x15ml conical tubes

Standard

The Standard model is a cost-effective system for homogeneous temperature control during routine incubations. Advanced ventilation design technology controlled by a digital microprocessor maintains temperature uniformity and stability to within $\pm 0.2\text{C}$. A stain-resistant interior protects against spillages, while removable stainless steel mesh shelves ensure that airflow remains unrestricted. Incubations may be set in precise 0.1C increments under a continuous or programmable timer function.

Vortex

The Vortex model has the same features as the Standard, but also includes a vortex platform for four microplates. The vortex platform is 20 x 30cm in size, and microprocessor-controlled to vibrate at speeds ranging from 50-1500 rpm. Three optional rotisseries may be purchased separately to allow the unit to be adapted for hybridisation techniques performed in 40mm, 15ml and 50ml tubes.

Orbital

The Orbital model includes as standard a bi-directional 27 x 20cm orbital shaking platform that exhibits both clockwise and anti-clockwise motion. Optional flask holders may be fitted to the orbital shaking platform to accommodate up to five 250ml or four 500ml flat-bottomed flasks, making this model a suitable bench-top shaker for growing overnight cultures of bacteria, yeast and insect cells. The shaking platform may be replaced by one of three optional hybridisation rotisseries, which may be purchased separately.

Reciprocal

The Reciprocal model is a 27x20cm reciprocal shaking platform incubator that may be adapted to accommodate 250ml and 500ml flat-bottomed flasks. The shaking-platform has a reciprocal motion that is perfect for incubation of Western blots and microbial cultures, and may be replaced by one of three optional hybridisation rotisseries. An optional platform with four 10cm pillars mounts comfortably on the shaking platform to double capacity if required.

Rocking

The Rocking model includes a 27x20cm rocking platform to provide the perfect motion and tilt angle to prevent gels and membranes from drying out during staining, blocking and antibody incubations. Interchangeable hybridisation rotisseries may be exchanged for the rocking platform to allow the unit to be customised for the full range of nucleic acid hybridisation applications, including Northern and Southern blotting techniques.

Technical Specifications	
Display	3.5" 64K colour-TFT display
Controller	32-bit Microdispenser-control
Control Interface	Touch screen & Graphical interface
Timer/Resolution	Continuous; Programmable 1-9999' with alarm / 1'
Temperature Control Range/Resolution	Ambient +5C to 85C / 0.1C
Temperature Uniformity/Accuracy at 37C	$\pm 0.2\text{C}$
Temperature Calibration	Yes
Dimensions W x D x H Inner Chamber	34 x 22.5 x 26cm
Exterior	44.2 x 46.2 x 45.2cm
Platform Dimensions	27 x 20cm (20 x 30cm for Vortex model)
Data-logging capacity	RS-232
Operating Voltage	110/220V ~ 50/60Hz (Dual, selectable)
Construction/Weight	Painted metal chassis; ABS front door panel / 29kg
Safety features	Safety-door and thermal safety switches; auto shut-off upon fan failure; auto-recovery after power failure

N.B. Alpha Laboratories reserves the right to change the specification without notice

Hybridisation Shaking Incubators

Catalogue Number	Description
EL9600	Standard incubator with stainless steel mesh shelves
EL9630	Vortex incubator with 20 x 30cm platform for 4 x microplates
EL9620	Orbital shaking incubator with 27 x 20cm platform
EL9640	Reciprocal shaking incubator with 27x20cm platform
EL9610	Rocking shaker incubator with 27 x 20cm platform

NB: none of the above include a rotisserie, these are available to purchase separately to fit the Vortex, Rocking, Orbital or Reciprocal models.

Hybridisation Shaking Incubator Accessories

Catalogue Number	Description
EL9650	Stainless steel mesh plate 32.5 x 34.5cm with 4 x holders
EL9654	Rotisserie for 8 x 40mm glass tubes (EL9666, EL9668, EL9670) (Tube not included)
EL9656	Rotisserie for 16 x 50ml disposable conical tubes (tubes not included)
EL9658	Rotisserie for 24 x 15ml disposable conical tubes (tubes not included)
EL9666	Glass tube 40 x 150mm (D x L) for EL9654
EL9668	Glass tube 40 x 200mm (D x L) for EL9654
EL9670	Glass tube 40 x 300mm (D x L) for EL9654
EL9660	Additional 27 x 20cm platform (with 4 x 10cm pillars) to double capacity of Orbital and Reciprocal incubators
EL9662	250ml flask holder for Orbital and Reciprocal incubators
EL9664	500ml flask holder for Orbital and Reciprocal incubators



Hotplates and Stirrers



These hotplates, stirrers and hotplate-stirrers feature an exceptionally durable, chemical resistant, white ceramic work surface. Their space-efficient design (20 x 23cm footprint, 19cm square work surface) makes them ideal for use on crowded bench tops and inside cabinets.

Advanced micro-dispenser controls allow quick, precise adjustment and maintenance of speed and temperature. Safety indicator LEDs on the front panel indicate when the heating and/or stirring functions have been activated. All three models are compatible with a wide variety of popular sizes of borosilicate glass beakers, flasks, bottles and other vessels.

All models are supplied with a support rod for mounting thermometers and temperature probes.

Technical Specifications

Speed range	60 - 1500rpm
Temperature range	Ambient +5 to 380C
Platform	19 x 19cm
Control	Quick Adjustment Knobs
Dimensions W x D x	20 x 23 x 11.5cm
Electrical Data	120V, 60Hz / 230V, 50/60Hz
Electrical Data	120V, 60Hz / 230V, 50/60Hz

Hotplate and Stirrers

Catalogue Number	Description	Pack size
EL9000	Hotplate, 19 x 19cm	Each
EL9010	Magnetic Stirrer, 19 x 19cm	Each
EL9020	Hotplate Magnetic Stirrer, 19 x 19cm	Each

Peristaltic Pump

This versatile peristaltic pump is an ideal accessory for gradient gel formation

Peristaltic Pump

Catalogue Number	Description	Pack size
EL9701	Peristaltic Pump 30-300rpm	Each

Technical Specifications	EL9701
Variable Flow Rate	1.2 - 1,140 ml/min
Pump Speed/Inc.	20 - 300 rpm/ 1rpm
Motor	Brushless Motor
Number of Rollers	1
Operating Temperature	Ambient to 40°C
Dimensions W x D x	20 x 34 x 13cm
Electrical Data	50W, 100V ~ 240V



Mini 3D Shaker

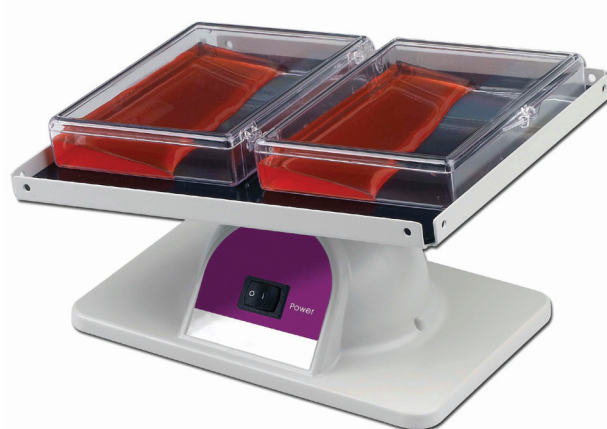
The Mini Shaker combines the motions of orbital shaking and rocking to produce a gentle, but thorough, 3-D action that is perfect for antibody incubation of Western blots and for staining gels.

The pitch and speed are optimised to generate a tilt angle that is large enough to ensure uniform distribution of solutions, yet small enough to prevent the centre of the blot from drying out. This has the added benefit of allowing users to work with minimal volumes, thus conserving valuable probes and antibodies.

A non-slip rubber mat keeps the boxes in place on the agitating platform, which, along with the housing, is very easy to clean and decontaminate after use.

The Mini Shaker's compact and light weight design allows it to be moved around the lab where needed. It is also safe for use in an incubator or cold room for temperature controlled reactions.

- The perfect speed and lift for blotting and gel staining
- Three-Dimensional motion
- Designed for use with Blot Boxes



Technical Specifications

Speed range	18rpm (115V) / 20rpm (230V)
Motion	3-D, nutating
Tilt Angle	5 degrees
Platform Size W x D	20 x 16.5cm
Ambient Operating Range	4 - 65C
Dimensions W x D x H	9.75 x 6.75 x 6in / 24 x 17.15 x 15cm
Weight	0.88kg
Electrical	115 or 230V 50/60Hz

Mini 3D Shaker

Catalogue Number	Description	Pack size
EL9080	Mini Shaker with 20 x 16.5cm tray, 2 x blotting boxes, non-slip mat	Each



Waver Shaker

The Waver Shaker range of multi-functional mixing devices includes high durability models for reciprocal, orbital, rocking and a combination model for maximum performance and versatility. Each of the four models provides outstanding uniform motion control. This range of shakers is ideal for bench tops, incubators and in cold rooms.



Take a look at the outstanding features:

- Microprocessor based keypads with digital controls allow simple adjustments
- Display shows preset time, continuous time, action scale and speed
- Lightweight and compact, for easy mobility, super quiet for optimum lab comfort
- High quality, stainless steel platforms include pop-on / pop-off installation holes for securing samples
- Additional platforms can be added for increased capacity

Waver Shaker Combi – combines three-dimensional shaking and rocking for maximal fluid movement. It can exactly control agitation due to its microprocessor controller and timer. This unit contains a larger 33 x 33cm stainless steel or acrylic platform. The platform angle is easily adjusted from 0 to 25 degrees and the rotation speed of the platform can be adjusted from 0 to 100rpm.



EL9040, EL9050, EL9060



EL9070



Waver Shaker Orbital

0.1 ~ 10.0 circular ; 0.1 circular increment
Platform 26 x 26cm



Waver Shaker Reciprocal

1 ~ 10 for 2.0 ~ 20 mm ; 1 scale increment
Platform 26 x 26cm



Waver Shaker Rocking

1 ~ 10 for 1.2 ~ 12mm ; 1 scale increment
Platform 26 x 26cm

Technical Specifications	EL9040	EL9050	EL9060	EL9070
Motion	Orbital	Reciprocal	Rocking	2D or 3D Combi
Stroke Length	20mm	20mm	12mm	20mm
Operation Mode	Orbital: 0.1 ~ 10.0 Circular: 0.1 Circular	Reciprocal: 1 ~ 10 for 2.0 ~ 20mm; 1 scale increment	Rocking: 1 ~ 10 for 1.2 ~ 12mm; 1 scale increment	Orbital and Rocking combined
Speed	0 ~ 200rpm	0 ~ 200rpm	0 ~ 200rpm	0 ~ 100rpm
Time	0 ~ 9999mins, 1min increment			
Controller	Digital microdispenser			
Display	4 digital red LED			
Operating	4 ~ 65	4 ~ 65	4 ~ 65	0 - 50
Carry Capacity	15kg			
Special Functions	-	-	-	Adjustable Platform Angle 0-25 degree
Platform	W260 x L260mm			
Operating Power	110 / 220V			
Weight	8kg			

Waver Shaker		
Catalogue Number	Description	Pack Size
EL9040	Waver Shaker Orbital	Each
EL9050	Waver Shaker Reciprocal	Each
EL9060	Waver Shaker Rocking	Each
EL9070	Waver Shaker 3D Combi	Each

Waver Shaker Accessories	
Catalogue Number	Description
EL9036	Strip Springs for orbital, reciprocal, or rocking (pack of 2)
EL9075	Hybridisation Water Bath for Waver Shaker
EL9037	33 x 33cm platform with 4 of adjustable 10cm or 20cm pillars and flat non-slip rubber mat
EL9039	Strip Springs for 2/3D Combi Shaker (pack of 2)
EL9531	Dimpled Mat 33 x 33cm

Vortex Mixer

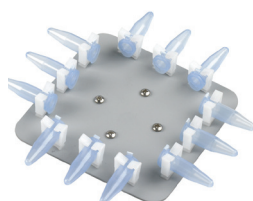
Alpha Laboratories' variable speed Vortex Mixer combines fast, efficient mixing with minimal vibration. Unlike other vortex mixers using elliptical orbits, the true circular orbit facilitates uniform sample vortexing even at low speed.

The CombiCup™ head, which is supplied as standard, accepts many different tube sizes, while the unique over-moulding technology used in its manufacture provides a sturdy plastic core with non-slip TPE that fits optional heads for microplates, microtubes, PCR strip tubes, 15ml and 50ml tubes and blood vials.

The Alpha Laboratories' vortex mixer may be used in 'touch' or continuous mode: 'touch' mode being activated by simply depressing the sample head and then stopped by releasing the pressure. An optimised counter balance system within the vortex mixer minimises vibration and movement of the unit during operation.

Its lightweight construction and small footprint allows it to be readily transported and used in areas where space is restricted. The vortex mixer is also safe for use in temperature-controlled environments, and may be used within a cold room.

- Touch or continuous mode
- Powerful, reliable motor with optimised counter balance
- Circular orbit for effective vortexing at any speed
- CombiCup head accepts a variety of tube sizes
- Versatile head attachment accessories for microplates and different tube sizes
- Suitable for a wide range of applications



Technical Specifications	
Speed range	115V: 0 - 3400rpm 230V: 0 - 2850rpm
Operating Modes	Touch or Continuous
Ambient Operating Range	4 - 65C
Dimensions W x D x H	5.5 x 6.3 x 5.1 in/14 x 16 x 13cm
Weight	4.84lb / 2.2kg
Electrical	115V or 230V, 50/60Hz

Vortex Mixer	
Catalogue Number	Description
EL5010	Vortex mixer with general purpose head
EL5012	Vortex Head - 32 x 0.2ml tubes or 4 x 8-strip tubes plus 24 x 0.5ml tubes and 24 x 1.5ml/0.2ml tubes
EL5014	Vortex Head - 1 x microplate or 64 x 0.2ml tubes or 8 x 8-strip tubes
EL5016	Vortex Head - 8 x 15ml and 8 x 12/13mm tubes
EL5018	Vortex Head - 6 x 50ml tubes
EL5020	Vortex Head - 12 x 1.5/0.2ml tubes, held horizontally
EL5022	Vortex Head - 4 x 15ml tubes, held horizontally
EL5024	Vortex Head - 2 x 50ml tubes, held horizontally



Mini PCR Workstation

You can eliminate contamination from your PCR reactions and other molecular biology applications with Alpha Laboratories' PCR Workstation, saving time, money and valuable samples. The Mini UV Workstation provides a convenient area for setting up PCR reactions in a nucleic acid free environment, thus limiting PCR reaction contamination.

Acting as a low cost alternative to a clean room, The powerful UV lights on the cabinet denatures nucleic acids in 5 to 30 minutes making them unsuitable for amplification. The cabinet incorporates safety features to prevent user exposure to UV light. The UV lights themselves are timer controlled and there are safety switches on the cabinet's doors, which turn off the UV lights when opened. The cabinet also acts as an efficient shield from beta radioactive emissions, and can therefore be safely used with isotopes such as ³²P.

Small and compact, the Mini UV Workstation is the perfect solution for laboratories constrained by space and budget. A reduced height and footprint allows the Mini UV Workstation to fit snugly and conveniently into those small areas within the laboratory that would otherwise remain unused.

- Inactivates nucleic acids in 5 to 30 minutes
- Doors fitted with safety switches
- Complete with four powerful, timer controlled UV bulbs
- Efficient decontamination of the complete work surface
- Suitable for work with ³²P
- For use with trays of size 68 x 54cm
Open base so must be used with a tray
- Dimensions (W x D x H) 560 x 350 x 510mm



Accessories

EL2670 Liners for PCR Workstation 68cm x 54cm

EL2680 General Purpose Tray 68 x 54cm - White

Technical Specifications

UV Lights	4 x 15 Watt
White Light	15 Watt
Dimensions (H x W x D)	510 x 560 x 350mm
Weight	12kg

Mini PCR Workstations

Catalogue Number	Description	Pack Size
UV1000	Mini PCR Workstation (requires additional base tray)	Each

Protective Trays and Liners

Protective spill trays and liners provide safe containment of spillages and lab bench protection. EL2670 and EL2680 are suitable for use with the Mini PCR Workstation



Protective Trays and Liners

Catalogue Number	Description	Pack Size
EL2661	Tray Liners APET 46x26cm	25
EL2662	Tray Liners APET 54x34cm	25
EL2670	Tray Liners APET 68x54cm for PCR Workstation	25
EL2671	Biohazard Tray 46x26cm, White	Each
EL2672	Biohazard Tray 54x34cm, White	Each
EL2680	General Purpose Tray 68 x 54cm, White, for PCR WS	Each
EL2682	General Purpose Tray 54x34cm, White + APET liner	Each
EL2674	Biohazard Tray 68x54cm, White + APET liner	Each