

TK New Hardware Design Column: Ultrafit™ System

New Hardware Design Column: Ultrafit™ System

The new Ultrafit™ design will make your work in the laboratory more comfortable and efficient. The Ultrafit™ system, as well as helping in the replacement of the frit at the column entrance, enables you to easily include either additional frits or a pre-column, always with the utmost simplicity and economy and in no way whatsoever is the quality of the separation affected.

In designing the Ultrafit™ column, the greatest care has been taken to cover all the aspects that may occur in the loss of efficiency of the column. As a result of all this, dead volumes have been reduced to a minimum, entered by the system by means of a high precision mechanism, with inlet and outlet holes of 0.2 mm and first-class tapers for the perfect distribution of the inlet and outlet flows, as seen in the three depicted Ultrafit™ options. The Ultrafit™ system enables a pre-column to be included without loss of efficiency, to columns as small as 30 x 4 mm packed with particles of 3 μm.

Moreover, the very best material has been selected for the construction of the column, with an ultra-shiny interior finish, of extremely low RMS, ensuring that no tube imperfection in the column will affect the quality of the separation.

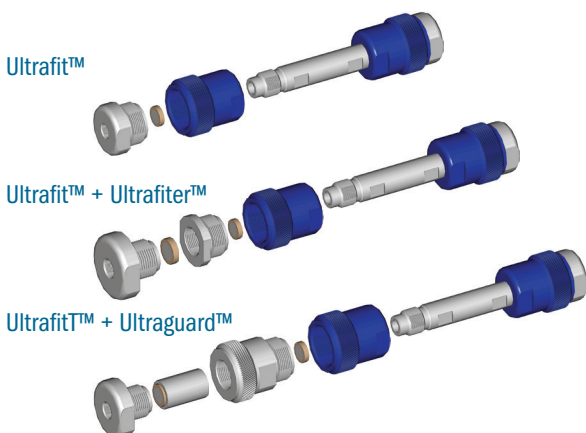
Ultrafit™ System Efficiency

Column	Efficiency (N/m)	AS (10%)
mediterranea sea18 Column 3 μm 5 x 0,46 cm Ultrafit™ System	134904	1,11
mediterranea sea18 Column 3 μm 5 x 0,46 cm with Prefilter Ultrafilter™	135042	1,05
mediterranea sea18 Column 3 μm 5 x 0,46 cm with Precolumn Ultraguard™	137819	1,07

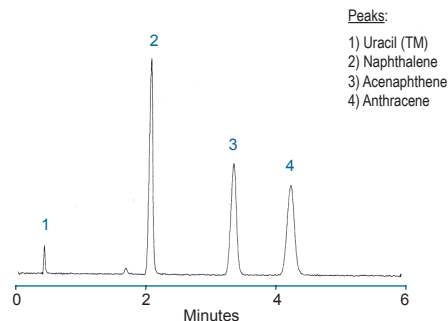
Chromatographic Conditions:

Column: mediterranea sea18 3 mm 5 x 0,46 cm
 Eluant: Acetonitrile/Water 65:35
 Flow: 0,9 ml/min
 Det. UV 254 nm
 Temp. Room
 Sample: Acenaphthene 0,2 mg/ml

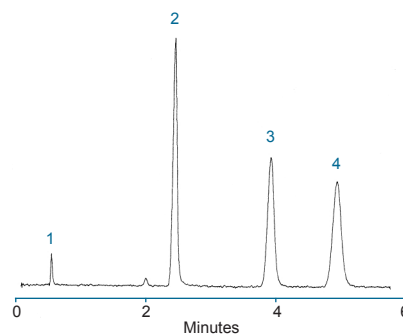
Ultrafit™ System Configuration



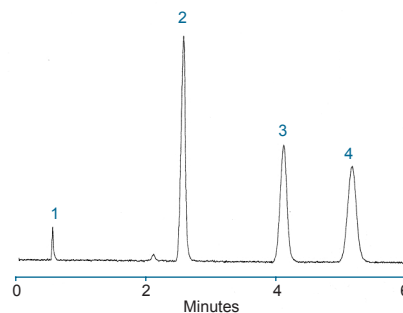
Our Columns Mediterranea™, Europa Peptides, Europa Proteins & Tracer Excel are built with the new Ultrafit™ System



Column with Ultrafit™ System



Column with Ultrafit™ System + Ultrafilter™



Column with Ultrafit™ System + Ultraguard™